

# MEFCC 2026 COSPLAY GUIDELINES



# PROMOTING A SAFE & FUN COSPLAY COMMUNITY



**MEFCC CELEBRATES COSPLAY AS A CREATIVE EXPRESSION OF FANDOM. TO ENSURE THAT ALL ATTENDEES INCLUDING FAMILIES, VISITORS, COSPLAYERS, EXHIBITORS, AND STAFF, ENJOY A SAFE AND WELCOMING EXPERIENCE, ALL COSPLAYERS MUST COMPLY WITH THE FOLLOWING GUIDELINES.**

# CULTURAL RESPECT & PUBLIC DECENCY



## WHAT IS ACCEPTABLE

- Character costumes from anime, games, films, and pop culture that are culturally appropriate and suitable for a family-friendly environment.
- Gender-inspired or alternate character interpretations that remain respectful and clearly character-based.
- Full-body suits for all genders, provided they are modest, culturally appropriate and suitable for a family-friendly environment.
- Traditional, fantasy, or casual character outfits that align with these cosplay guidelines and the MEFCC **Event Code of Conduct**.
- Costumes must respect UAE cultural values, public decency standards and be suitable for a family-friendly environment.
- Cosplay that allows safe movement, clear visibility, and comfort in crowded spaces.
- Clearly fictional, non-functional props that have been approved by MEFCC staff.



## WHAT IS NOT ACCEPTABLE

- Outfits that are excessively revealing or designed in a way that compromises modesty.
- Sheer or transparent materials that expose private areas or undergarments.
- Costumes that are suggestive or inappropriate for a family-friendly environment based on UAE cultural norms.
- Designs that mock, stereotype, or disrespect any country, culture, religion, or community.
- Costumes that appear partially nude or create the illusion of nudity.
- Attire that conflicts with UAE cultural norms or public decency standards.
- Costumes featuring hate symbols, discriminatory imagery, offensive themes or messaging.

Failure to comply with our **Event Code of Conduct** and any of these cosplay guidelines may result in refusal of entry or immediate removal from the event without refund, and in severe cases, legal action may be taken in accordance with UAE laws. MEFCC reserves the right to amend these terms and conditions at any time.

# EXAMPLES OF WHAT IS ACCEPTABLE



A full-coverage superhero suit with cape and armor styling that maintains modesty and a respectful, family-friendly appearance.



A respectfully adapted martial arts costume modified to ensure appropriate coverage and suitability for a public event.



A fully enclosed sci-fi armored suit designed for complete coverage, safe mobility, and clear visibility.



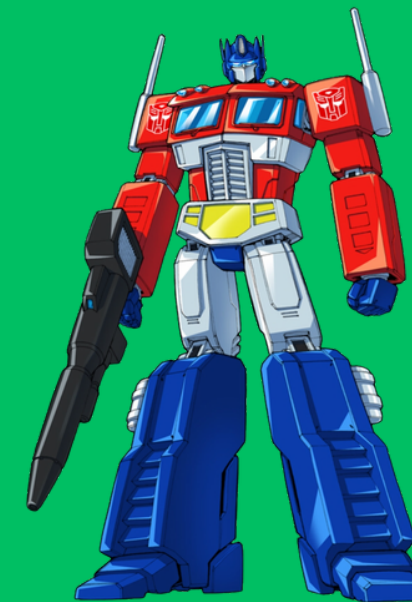
An elegant, modest princess gown suitable for a family-friendly environment and safe public movement.



A structured fantasy armor ensemble that provides sufficient coverage while preserving the character's heroic identity.



A modest swordsman outfit with full-length garments and safe, non-functional prop swords.



A full-body robotic or armored costume constructed safely to allow movement and crowd awareness.



A wholesome, full-coverage character costume appropriate for all ages and public settings.

# EXAMPLES OF WHAT IS ACCEPTABLE



A respectful, character-based interpretation that maintains modest coverage and aligns with public decency standards.



A professional suit with a subtly revealed emblem styled in a tasteful and non-revealing way.



A culturally respectful fusion cosplay combining full-coverage superhero attire with traditional elements worn appropriately.



The iconic group long cloak worn in a modest, full-coverage manner without inappropriate alterations.



A performance-inspired outfit adapted to ensure appropriate length, coverage, and public suitability.



A character-inspired look incorporating a fitted top or armor piece to ensure proper coverage and modest presentation.

# EXAMPLES OF WHAT IS NOT ACCEPTABLE



A version of the character that includes exposed torso elements and does not meet public modesty and coverage requirements.



A traditional version featuring minimal coverage that may not align with UAE public decency standards without appropriate modification.



An armor design that exposes large areas of the body and does not meet modesty requirements for public events.



A revealing adaptation that exposes the midsection and does not provide sufficient coverage for a family-friendly environment.



A cross-dressing costume interpretation that may conflict with local cultural and public decency expectations and is therefore restricted.



A costume variation featuring abbreviated styling that does not provide adequate coverage for a family-friendly venue.

# BEHAVIOUR, CONSENT & PERSONAL BOUNDARIES

## HELP US BUILD AN INCLUSIVE AND SAFE MEFCC BY TREATING EVERYONE WITH RESPECT

- Treat everyone with respect, regardless of their backgrounds or cosplay skillset.
- Bullying, discrimination, and aggression are strictly prohibited.
- Cosplay is not consent. Fans will need to always ask for consent before:
  - Taking photos or videos
  - Touching costumes, props, wigs, or accessories
  - Posing with cosplayers
- If a cosplayer says “No” to any requests, it must be respected immediately and without question.
- Harassment, stalking, intimidation, inappropriate comments, gestures, or physical contact will not be tolerated.
- Parents or guardians must approve photos involving minors.
- Profanity or aggressive behaviour is prohibited.
- Staged or simulated violence is not allowed.

**Failure to comply with our Event Code of Conduct and any of these cosplay guidelines may result in refusal of entry or immediate removal from the event without refund, and in severe cases, legal action may be taken in accordance with UAE laws.**

**MEFCC reserves the right to amend these terms and conditions at any time.**



# WEAPONS, PROPS, & ACCESSORIES



## MEFCC GUIDELINES

- All prop edges must be blunt.
- Props must not pose a risk in crowded areas.
- Confiscated items cannot be stored by staff.



## CONDITIONALLY ALLOWED PROPS

- Clearly fictional or non-realistic weapons.
- Foam, EVA, cardboard, plastic, or lightweight wooden props.
- Replica firearms with a visible red/orange safety tip.
- Unstrung or loosely strung bows.
- Secured or coiled whips.
- Oversized props (over 6ft) must be accompanied by an experienced spotter.



## PROHIBITED ITEMS

- Real weapons of any kind.
- Realistic replica firearms (unless explicitly approved).
- Sharp or metal weapons.
- Functional bows, crossbows, or slingshots.
- Sharp arrows or projectiles.
- Explosives, fireworks, smoke devices, glitter bombs, or pyrotechnics.
- Pressurized or hazardous items.

# COSTUME SIZE, MOBILITY, & CROWD AWARENESS

## COSPLAY SHOULD NEVER BLOCK OR ENDANGER OTHERS



### GENERAL RULES

- You must be able to pass through standard doorways unassisted.
- Costumes taller than 6ft 5in or wider than 6ft require a spotter.
- Large wings, armour, tails, or trains must always be manageable.
- Sitting, kneeling, or posing in walkways, aisles, or queues is not permitted.



# PHOTOGRAPHY & PUBLIC SPACE ETIQUETTE

## RESPECT SHARED SPACES.



### MEFCC GUIDELINES

- Avoid blocking aisles, entrances, exhibitor booths, or emergency exits.
- Photography should not disrupt crowd flow.
- Follow staff instructions regarding restricted areas.
- Use the Allocated Photography zone at Cosplay Central to conduct a full, uninterrupted cosplay photoshoot with your favourite cosplayers.



# COMPLIANCE, SECURITY & ENFORCEMENT



## MEFCC STAFF AND SECURITY ARE HERE TO HELP ENSURE A SAFE EXPERIENCE FOR EVERYONE.

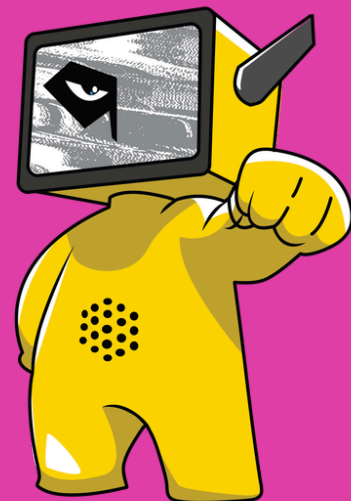
- All attendees in cosplay must comply with instructions from staff and security. Attendees will be expected to:
  - Go through the Cosplay Screening Zone at the entrance prior to Tickets/Wristbands collection to ensure their costumes meet MEFCC Cosplay Guidelines.
  - Declare all costumes and props during screening for approval.
  - Follow instructions from staff & security as they monitor compliance throughout MEFCC on all show days.
- Final decisions on costumes, props, and conduct rest with MEFCC management.
- Failure to comply may result in:
  - Requested costume or prop adjustments
  - Confiscation of items (such items cannot be stored by staff)
  - Restricted access to certain areas
  - Removal from the event in serious cases
- Attendees are encouraged to report any cases of harassment, unsafe behavior, or consent violations to MEFCC Staff or Security Immediately.

**Failure to comply with our Event Code of Conduct and any of these cosplay guidelines may result in refusal of entry or immediate removal from the event without refund, and in severe cases, legal action may be taken in accordance with UAE laws. MEFCC reserves the right to amend these terms and conditions at any time.**



# THANK YOU!

## WE WANT TO HEAR FROM YOU!



IF YOU'VE GOT ANY QUESTIONS ON THE  
GUIDELINES, OR COSPLAY IN GENERAL,  
PLEASE EMAIL US AT **COSPLAY@MEFCC.COM**

## SEE YOU AT MEFCC 2026!